



Locating circumference lines

on a corset pattern



Locating circumference lines 1 / 9

Though circumference lines for major body measurements (bust, underbust, waist, hip) are very important for the fit of the garment, they are rarely marked on patterns.

Some corset patterns will have the waist line marked (for waist tape application) while the large majority of antique corset patterns and/or patent diagram don't have any circumferences marked.

This makes it harder to fit the corset and alter the pattern.

Pattern used as the example is Overbust Corset Pattern DOLORES by AraneaBlack.



Locating circumference lines 2 / 9

Fitting a corset goes smoother when we have circumference positions because we can measure everything and compare our own proportions to the pattern.

This makes the needed adjustments more obvious and quicker.

Learning how to, at least roughly, locate major torso circumferences, makes every other step in the process of making a corset much easier.

To top it off, this will also make it easier to resize and alter antique patterns and/or patent diagram because we can get a pretty good idea of measurement proportions.

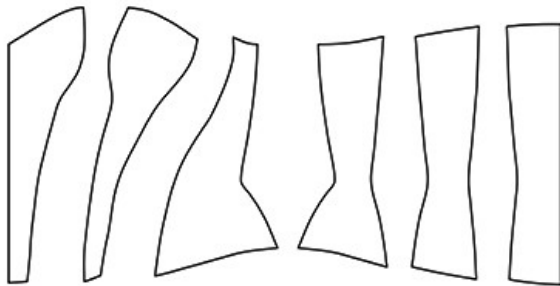




Locating circumference lines 3 / 9

We start by laying pattern pieces in the order in which they are to be sewn together. From Center Front to Center Back (or other way around depending on the pattern).

Position Center Front and Center Back so that they are parallel to each other. Arrange the rest in between as best as you can. (You can rearrange them later, if needed)

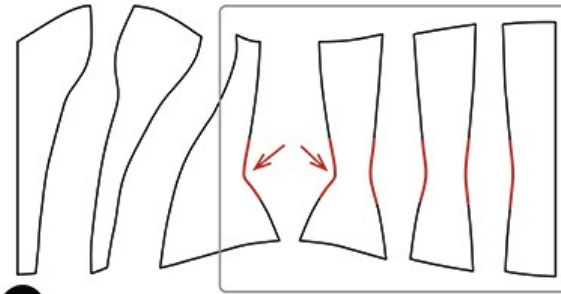


Locating circumference lines 4 / 9

Waist circumference is the most important body measurement on a corset so it's to be located first.

Pattern pieces, from the side seam to center back, usually dip in rather obviously on the waist line since it will be the smallest part.

Also, most of the time, it is parallel to CB.

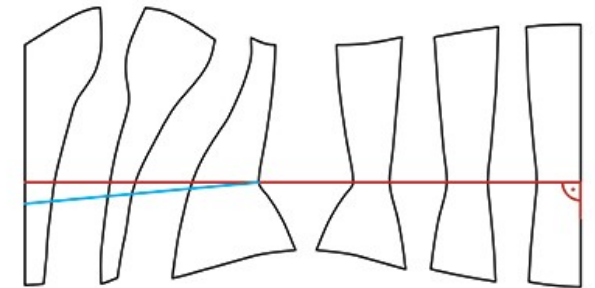


Locating circumference lines 5 / 9

Mark where the patterns are the smallest. This is most likely the waist line position.

Draw a long line over all pattern pieces from Center Back to Center Front for modern corset patterns.

Antique styles sometimes have waist lines lowered on pieces from Center Front to side.



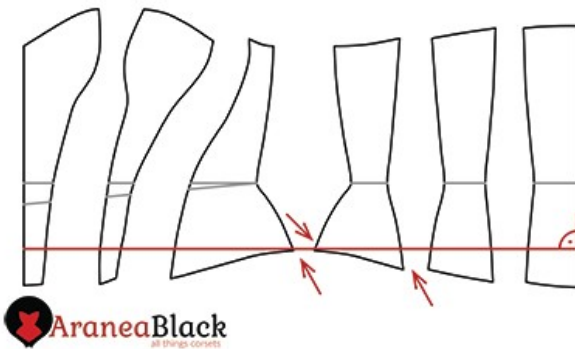


Locating circumference lines 6 / 9

Hip line is the widest measurement on the corset, under the waist line.

Largest point on the patterns in most likely located on side seams. They are usually fairly obviously flaring out.

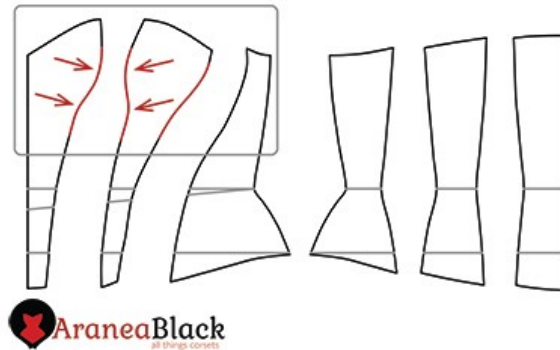
Draw a line over all pattern pieces on the right angle to CB seam line.



Locating circumference lines 7 / 9

On overbust/midbust styles, we focus on the front bust curves on pieces from Center Front to Side.

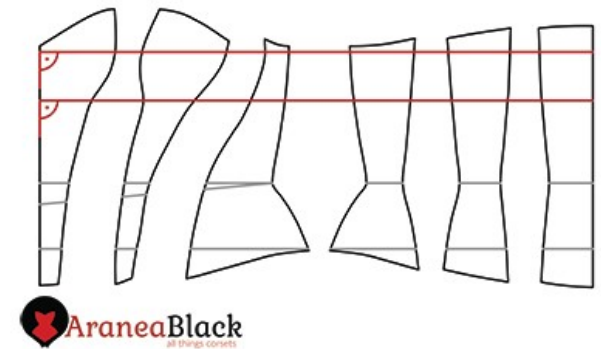
Where the bust curve looks the fullest, we mark the bust circumference. Where that curve dips in, under the bust line, is probably the underbust circumference location.



Locating circumference lines 8 / 9

Draw long lines, on a right angle to Center Front, over all pattern pieces to mark the estimate position of both bust and underbust circumferences.

If the corset is an underbust style, simply apply the same logic as with the hip line, just over the waist line instead of under.



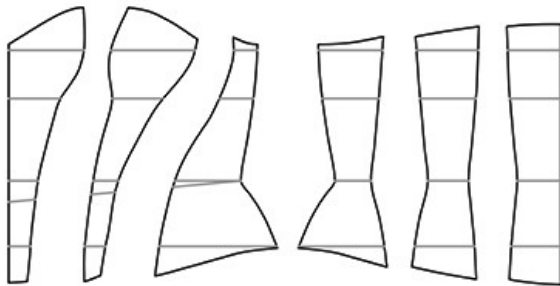


Locating circumference lines 9 / 9

With major circumferences roughly located and marked, pattern is ready for a mockup as well as further testing and fitting.

This also allows for easier resizing of antique corset patterns and/or patent diagrams, if you ever decide to play with it.

Happy sewing!!!



Don't forget to check out Aranea Black web page www.araneablack.com for more free corset patterns, corset construction instructions and other useful information!

You can make and sell as many garments as you like from using AraneaBlack patterns.

Feel free to send an email to Aranea Black if you are experiencing any difficulties with the content, have any questions or suggestions.

I'm always interested in hearing from you!
araneablack@araneablack.com



For a look behind the scenes, follow Aranea Black on social media
www.facebook.com/AraneaBlackCorsets/
www.instagram.com/araneablackcorsets/
www.twitter.com/DuchessMorgoth

Use **#araneablackpattern** when posting your corset projects based on Aranea Black corset patterns to spread free corset hugs!