

This tutorial contains the basic information on how to sew boning channels for corsets using the sandwich method.

When broken into pieces, sandwich method is a variation of the welt seam construction. We use two strength layers to sew a corset which provides a lot of options on where to add boning.

It is easy to learn but requires precision.

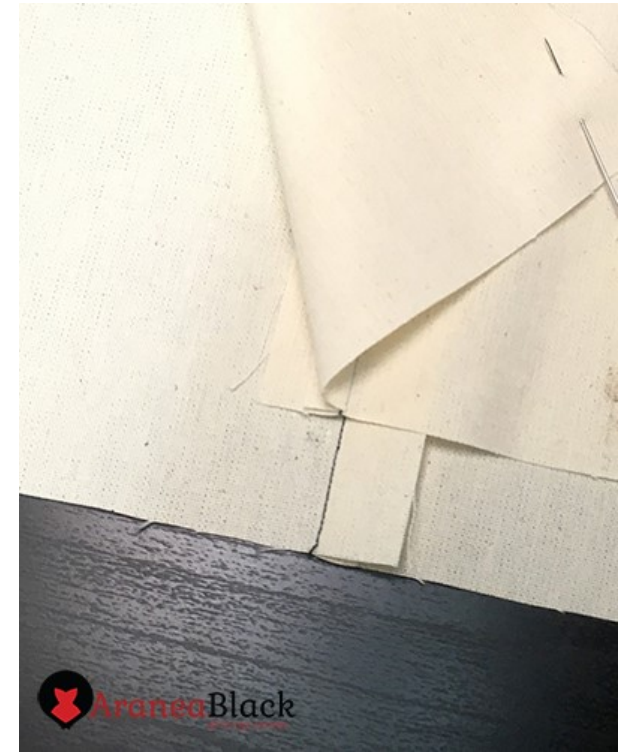
Tutorial sample is made using 200g cotton calico and 5mm wide spiral steel boning.



Cut out all pattern pieces twice from the same strength fabric.

Start by laying your pattern pieces right side on right side (or face on face) and stitch them together with a straight stitch.

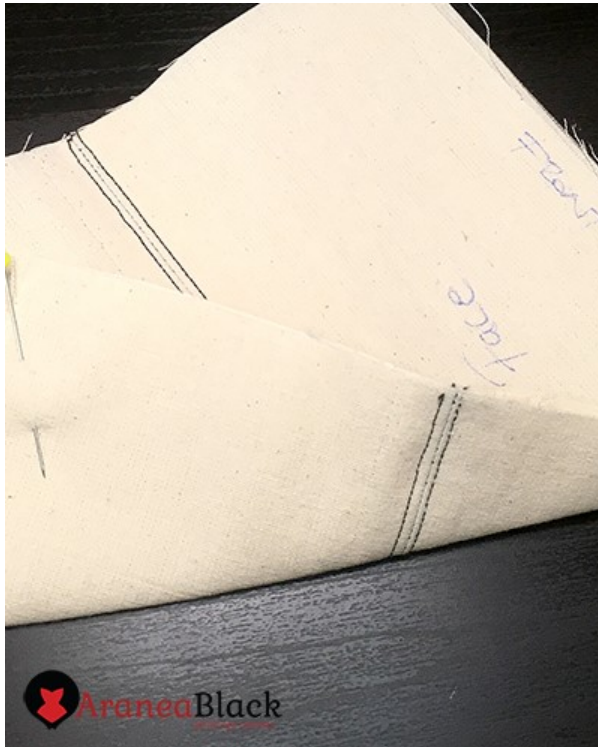
Be very precise and consistent when sewing.



Iron all pattern pieces on one layer to one side.

On the other layer, iron them to the opposite direction.

Grade seam allowances by cutting the inner width in half. This will minimize seam allowance lines showing through.



Start making the corset by basting a waist tape the wrong side of one of the corset layers.

With the waist tape secured in place, lay the layers on top of each other, face on face to connect them on the center front and back line.

Flip it inside out and add the front busk to your corset before going further.

Line up seam lines on top of each other so their connecting seam lines match as best as possible.

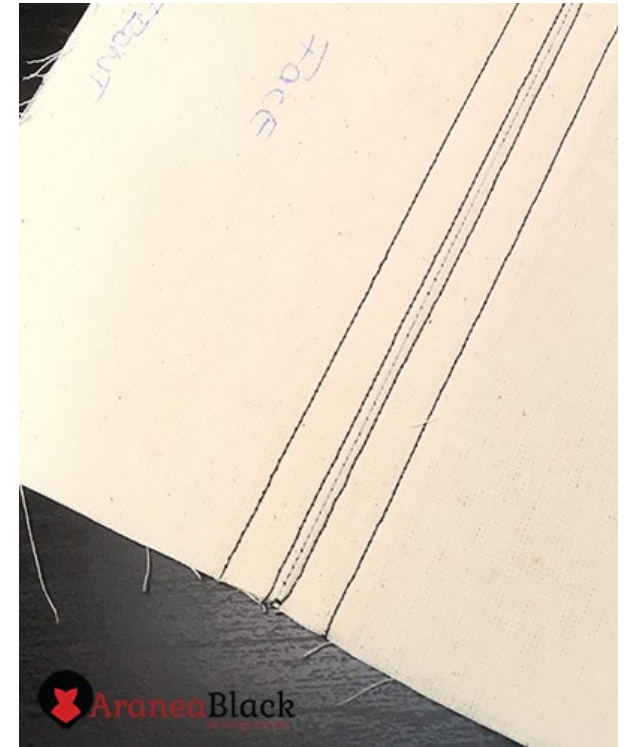
Pin or baste in place the two corset layers together to prepare them for sewing boning channels.

Topstitch close to the connecting seam to start making the boning channels.

Distance from the connecting seam to the first line of topstitching shouldn't exceed 2mm or 5/64".

Stitching should be very similar looking on both sides.

If not, unpick and try to reposition the two layers a bit better.



The other line of topstitching will for the bone channel.

Width of the boning channel depends greatly on the width and thickness of chosen boning, fabric thickness and the number of fabric layers.



Create some samples using the same materials the finished corset will be made with to test ideas and plan out the details.

Massive benefit of using the sandwich method construct corsets is the ability to add strong boning channels anywhere on the corset by simply stitching two parallel topstitch lines!

Happy sewing!

## Welt Seam Construction - Sandwich Method

Don't forget to check out Aranea Black web page [www.araneablack.com](http://www.araneablack.com) for more free corset patterns, corset construction instructions and other useful information!

You can make and sell as many garments as you like from using AraneaBlack patterns.

Feel free to send an email to Aranea Black if you are experiencing any difficulties with the content, have any questions or suggestions.

I'm always interested in hearing from you!  
[araneablack@araneablack.com](mailto:araneablack@araneablack.com)



For a look behind the scenes, follow Aranea Black on social media  
[www.facebook.com/AraneaBlackCorsets/](http://www.facebook.com/AraneaBlackCorsets/)  
[www.instagram.com/araneablackcorsets/](http://www.instagram.com/araneablackcorsets/)  
[www.twitter.com/DuchessMorgoth](http://www.twitter.com/DuchessMorgoth)

Use **#araneablackpattern** when posting your corset projects based on Aranea Black corset patterns to spread free corset hugs!