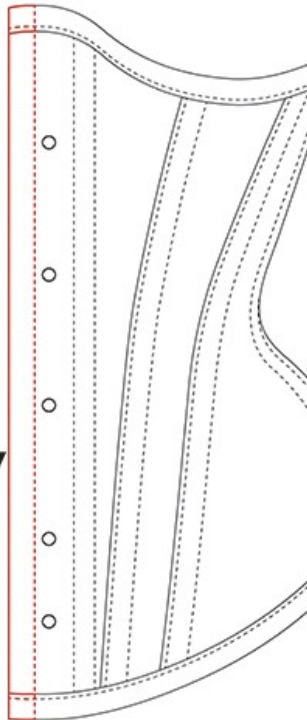




Next
Level

Front Modesty Placket



Front Modesty Placket 1 / 7

There are corset parts that aren't necessary but are a very good thing to include.

Front Modesty Placket is one of those things.

There are at least 3 different ways to add a modesty placket to a corset.

This tutorial will focus on one of them. The easiest one.

Pattern used as an example is Underbust Corset Pattern SONYA by AraneaBlack.



Front Modesty Placket 2 / 7

Front Modesty Placket is a little bit of extra fabric added to the knob side of a corset busk.

It's purpose is to close off the little gap between the two sides of the split busk.

With this gap closed, the corset has a uniform look in color and fabric because the placket hides the skin/clothing under it and it also removes any chance of the busk pinching the wearer.

Modesty placket can be boned to add rigidity of the center front.





Front Modesty Placket 3 / 7

This method of adding the Modesty Placket requires us to draft the placket into the corset pattern.

No matter the method, plackets are always added to the knob side of the busk, meaning the left-hand side on a finished corset (for right-handed busk insertion).

Start by taking the patterns Front Center pattern piece and flipping it to the correct side.

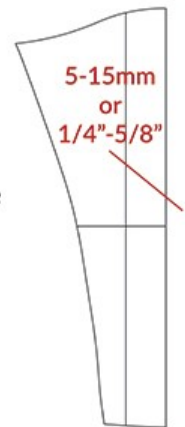


Front Modesty Placket 4 / 7

Minimum Modesty Placket width is 5mm or 1/4" while the maximum shouldn't exceed 15mm or 5/8".

Width depends on the personal preference and if there will be a bone added to it.

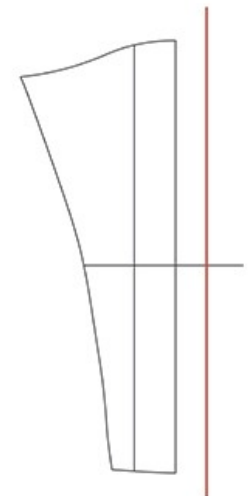
Width of the bone will have a large impact on the width so it's good to treat the Placket like a boning channel.



Front Modesty Placket 5 / 7

Measure the desired Front Modesty Placket width from the Front Center seam line and mark it.

Draw a line parallel to the Front Center seam line.



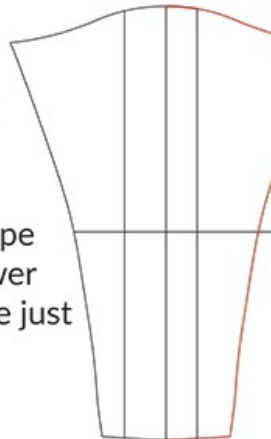


Front Modesty Placket 6 / 7

Flip the pattern piece and trace the top and bottom edge on to the added Placket.

This way the edge of the Front Modesty Placket won't poke outside of the overall corset shape.

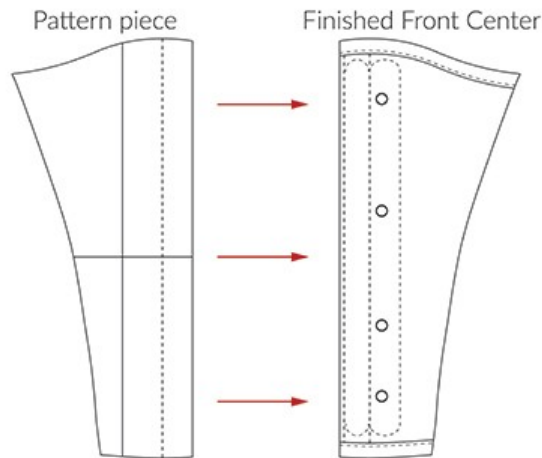
If the corset edge shape is very aggressive, lower the Placket edge more just to be safe.



Front Modesty Placket 7 / 7

Your pattern is ready to make a corset!

Happy sewing!!!



Don't forget to check out Aranea Black web page www.araneablack.com for more free corset patterns, corset construction instructions and other useful information!

You can make and sell as many garments as you like from using AraneaBlack patterns.

Feel free to send an email to Aranea Black if you are experiencing any difficulties with the content, have any questions or suggestions.

I'm always interested in hearing from you!
araneablack@araneablack.com



For a look behind the scenes, follow Aranea Black on social media
www.facebook.com/AraneaBlackCorsets/
www.instagram.com/araneablackcorsets/
www.twitter.com/DuchessMorgoth

Use **#araneablackpattern** when posting your corset projects based on Aranea Black corset patterns to spread free corset hugs!